

RECENT UPGRADES TO TED 3.35

14th of February, 2007.

Since version 3.29 was release on the 31st of January 2007 a number of additional updates have been released. This document describes these recent updates and three current issues.

Recent Updates

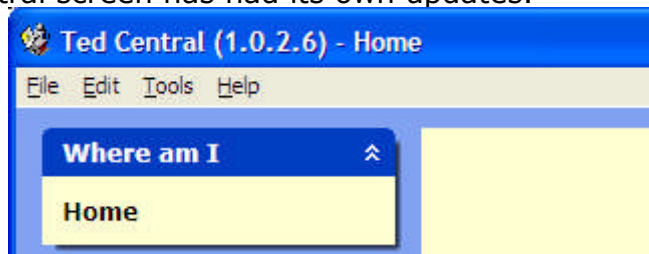
The latest version of Ted is 3.35 and contains the following updates:

- Fix reporting of Provider details when exporting 2006 data,
- Fix the Exception Report so it correctly identifies what fields need to be reviewed,
- Fix the Study Reason validation to allow **@@ Not Stated**,
- Re-enable outcome code **90 Result Unavailable** in Queensland,
- Add the following new Funding codes for Queensland:
 - **BSV Business Skills Vouchers**
 - **WSV Work Skills Vouchers**
- Add the following new Funding codes for New South Wales:
 - **13B Business Skills Vouchers**
 - **13W Work Skills Vouchers**

Check the version of Ted Central

As well as updates to Ted, the new Ted Central screen has had its own updates.

You can check the version of Ted Central by looking at the blue caption bar on the top of the Ted Central window and read the four numbers in brackets.



The latest version is **1.0.2.6**

If you have version 1.0.2.5, Ted Central cannot automatically update itself. Please download the following file and save it into your Ted folder:

<http://www.omniscient.com.au/upgrade/ted/Ted%20Central.exe>

When you save the file you **will** be asked if you want to replace an existing file, say yes. If the file gets saved with no question about replacing and existing file then you have saved the file in the wrong folder.

Current Issues

Issue 1: Security Warning

Some users have started to see the screen on the right each time they start Ted.

The screen is asking whether you trust the software you have downloaded, in this case software that you have downloaded from Omniscient Australia's website.

To indicate that you trust this software, un-tick the check-box at the bottom left and then click the Run button.



Issue 2: Ted is slow, freezes or ...

Bellow are a list of symptoms you may have observed:

- Ted and other programs start to run slowly,
- If left running for a while Ted freezes,
- The Ted Central screen looses its close button.

Ted Central version **1.0.2.5** was found to have a problem that could be the cause of these symptoms. Please follow the instructions listed above on how to upgrade to **1.0.2.6**

Issue 3: Does Ted need the Internet Connected?

Early version of Ted Central required the Internet to always be connected. The most recent version **1.0.2.6** does not need the internet connected to just run Ted. But if you want to check or download updates the the internet must be connected.